

# Early Learning Facilities Program (ELF)

Health and Safety Minor Renovation  
Funding Round Overview & Q&A

Katrina Matson, Juan Aguilar, Stephanie Hohnhorst, & Ali Tope,  
Program Managers

Kristin Ramos & Megan LaPalm  
SECTION SUPERVISOR & SECTION MANAGER

Grace Ssebugwawo & Alisha Burkett, DCYF

OPENS 2/1/2024



Washington State  
Department of  
**Commerce**

# We strengthen communities



HOUSING AND  
HOMELESSNESS



INFRASTRUCTURE AND  
BROADBAND



SMALL BUSINESS  
ASSISTANCE



ENERGY



PLANNING AND TECH  
ASSISTANCE



COMMUNITY  
SERVICES AND FACILITIES



CRIME VICTIMS AND  
PUBLIC SAFETY



ECONOMIC  
DEVELOPMENT

# The Early Learning Facilities Program

---

- This program is funded by the Washington Legislature to address the critical need for early learning opportunities for children from low-income households.
- **Legislation**
  - Intent [RCW 43.31.565](#)
  - Eligible Activities [RCW 43.31.577](#)
- **Goals**
  - Support Washington's commitment of developing high quality early learning opportunities for children.
  - Minor renovations to improve health and safety for children in early learning facilities.
- **Funds Distribution**
  - Grant funds are provided as a reimbursement to costs incurred by the grantee
  - All grant funds will be secured with real estate, typically through a deed of trust to ensure the public benefit of the funds is achieved for at least 10 years
  - Commerce can only reimburse for expenses incurred after the date of the award letter.





# Health and Safety Minor Renovation Eligibility

---

- Non-profit organizations
- For-profit businesses
- Public entities
- Public school districts, private schools, and charter schools
- Tribes



# ELF Health and Safety Program Eligibility

---

- Applicants must currently be or intend to be
  - Licensed through the [Department of Revenue](#) to conduct business in Washington State
  - Registered with the Secretary of State, if applicable.
  - Licensed with DCYF
  - Prepared to coordinate with contractors to ensure state prevailing wage is being paid ([LNI Prevailing Wage Look\up](#))
  - ECEAP/WCCC enrollment is not required
  - Expansion is not allowed



# Funding Availability

---



- The Capital Budget designated \$5,000,000 for the Health and Safety round for minor renovations



# Health and Safety Minor Renovation Funds Available

---



- **Minimum Request Amount:**
  - \$10,000.00
- **Maximum Request Amount\***
  - \$200,000.00
- \* Family home requested funds may not exceed 50% of the current tax assessed value of the home

# ELF Health and Safety Overview – Estimated Timeline

Estimated Timeline	Activity
February 1, 2024 7:00 AM PDT	Applications open
February 22, 2024 5:00 PM PDT	Pre-Applications <u>Received</u> by Deadline (no exceptions)
February 24 - March 1, 2024	Pre-Applications reviewed for eligibility; General Application released to eligible and non-eligible notified
April 16, 2024 5:00 PM PDT	General Applications <u>Received</u> By Deadline (no exceptions)
Mid April – End of June 2024	Applications Reviewed & Scored
July 2024	Awarded Applicants Selected
August 2024	Awards Announced

- Commerce reserves the right to change the timeline without notice.



# Online Application Instructions



# Online Application Instructions



[Serving Communities](#) [Building Infrastructure](#) [Growing the Economy](#) [Promoting Washington](#) [Q](#)

## Early Learning Facilities Program

The Department of Commerce manages funding awarded through direct appropriation and competitive processes that establish new capacity for early learning providers. The Early Learning Facilities (ELF) program supports Washington's commitment of developing additional high quality early learning opportunities for children from low-income households. Commerce's partners in the program are the Department of Children, Youth, and Families, the Office of Superintendent of Public Instruction, Washington Community Reinvestment Association, Enterprise Community Partners, Craft 3 and the Early Learning Facilities Advisory Board.



### Related Law

[RCW 43.31.565 through RCW 43.31.583](#)

[Link to 2021-23 Program Legislation:](#)

[SHB 1080, Sections 1057 and 1083](#)

[ESHB 1370](#)

[Link to 2019-21 Program Legislation:](#)

[SHB 1102, Section 1037](#)

[Links to 2017-19 Program Legislation:](#)

[HB 1777](#)

## 2023-2025 Health & Safety Minor Renovations Grant

# Online Application Instructions

Washington State  
Department of  
**Commerce**

**Existing ZoomGrants™ Users:** Email   
Password

☐ Stay logged in? (Admins and Reviewers only) **Login**

[Forgot password?](#)

[HELP](#) [RESOURCES](#) [A ▲ ▼](#)

Search **Search**


You must be logged in to apply.

**New ZoomGrants™ Account**

Washington State Dept. of Commerce

# Online Application Instructions-ZoomGrants

---



Application Status: Not Submitted

**Apply Now/Start Application**

USD\$ 0.00 requested

**Summary** Pre-Application General Application Questions Budget Tables Documents



# Online Application Instructions-ZoomGrants

Application Summary

Pre-Application

General Application Questions

Budget

Tables

Documents

## Pre-Application:

**Tab 1:** Application Summary Tab

**Tab 2:** Pre-Application Questions

## General Application:

Only Available After Pre-Application Submitted and Approved

**Tab 3:** General Application Questions

**Tab 4:** Budget

**Tab 5:** Tables (for responding to questions #28 & #29)

**Tab 6:** Documents

**Refer to the Program Guidelines document on the Early Learning Facilities website for additional detail**



# Washington State Department of **CHILDREN, YOUTH & FAMILIES**

Grace Ssebugwawo, Community Funded ECEAP  
Alisha Burkett, DCYF Licensing Process

[dcyf.providerportal@dcyf.wa.gov](mailto:dcyf.providerportal@dcyf.wa.gov)

[dcyf.welcome@dcyf.wa.gov](mailto:dcyf.welcome@dcyf.wa.gov)

# DCYF's Mission, Vision, and Values

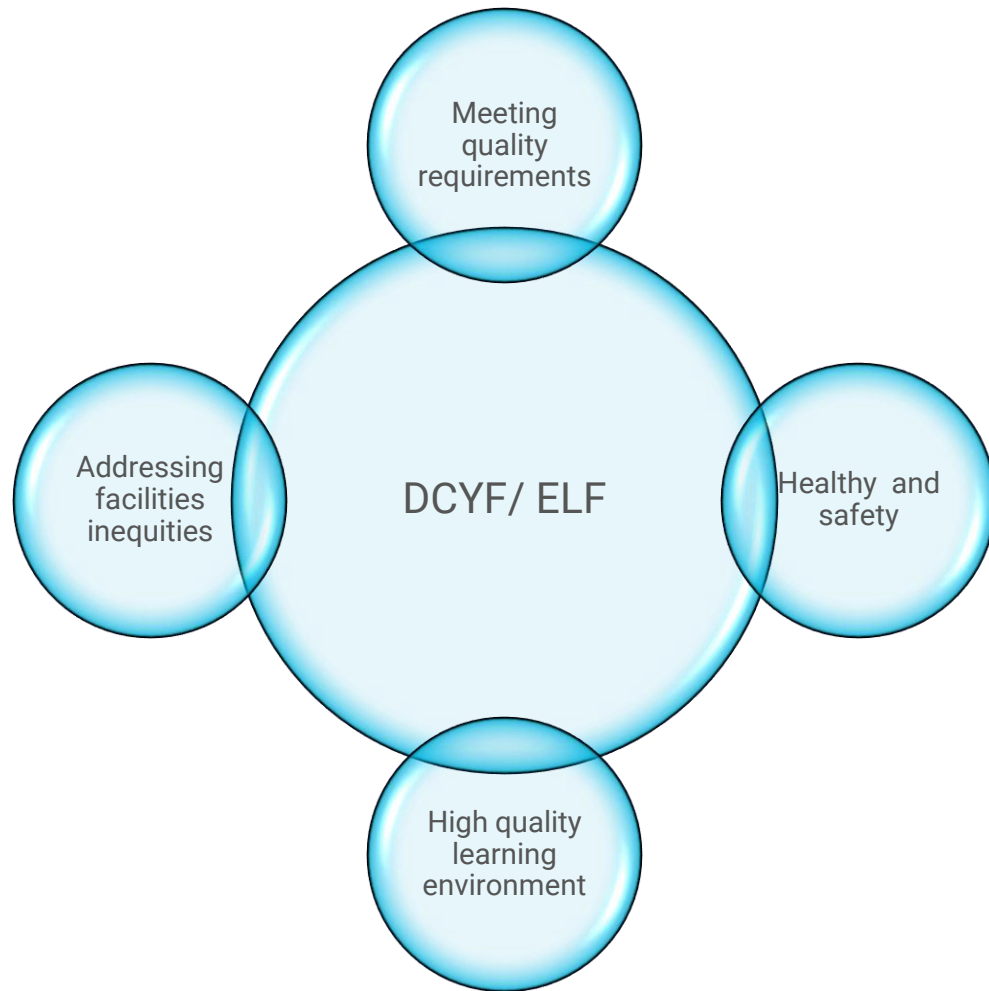
**Mission:** Protect children and strengthen families so they flourish.

**Vision:** All Washington's children and youth grow up safe and healthy—thriving physically, emotionally, and educationally, nurtured by family and community.

**Values:** Inclusion, Respect, Integrity, Compassion, Transparency



# DCYF and ELF Minor renovation program intersection





# Extreme Childcare Desert

A zip code without available childcare surrounded by zip codes without available childcare.

In 2019 DCYF identified 35 extreme childcare deserts

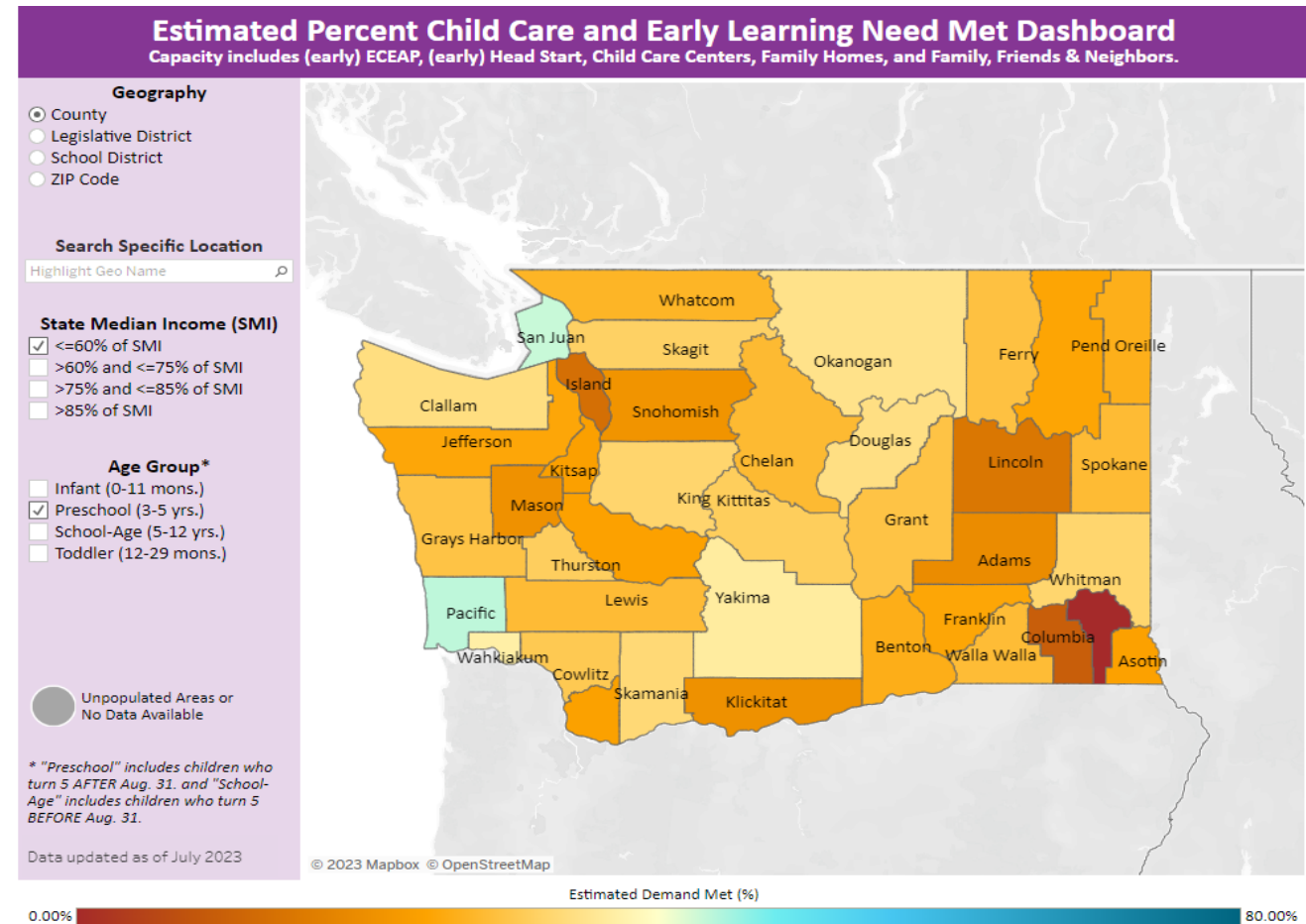


# Childcare Need and Supply Data

Capacity includes;

- Early ECEAP ,
- ECEAP ,
- Head Start,
- Child care Centers
- Family homes
- Family , friends and neighbors

[Child Care Need and Supply Data](#)



# Child Care Need and Supply Data Adams, Island, and Lincoln counties



Geography	Served	Subsidy	Private	Need	Estimated Need Met
Adams County	155	130	25	802	19.33%

Geography	Served	Subsidy	Private	Need	Estimated Need Met
Island County	176	115	61	1,332	13.21%

Geography	Served	Subsidy	Private	Need	Estimated Need Met
Lincoln County	33	27	6	222	14.86%

[Child Care Need and Supply Data.](#)



# DCYF Support and Pre-Licensing Services

DCYF supports ELF grant recipients by offering technical assistance and resources.

Technical assistance focus areas:

- Site selection and feasibility
- Facility design
- Plan Reviews
- Licensing requirements
- Licensing processes





# Accessing DCYF Support



# Language Support and Technical Assistance



# Language Support



## DCYF has partnered with Imagine Institute:

- **(English)** The Imagine Institute is available to provide language assistance in the applicants preferred language. Please contact The Imagine Institute at 206-492-5249 or email [CCSG@imaginewa.org](mailto:CCSG@imaginewa.org)
- **(Spanish)** El Imagine Institute está disponible para brindar asistencia lingüística en el idioma preferido de los solicitantes. Comuníquese con The Imagine Institute llamando al 206-492-5249 o envíe un correo electrónico a [CCSG@imaginewa.org](mailto:CCSG@imaginewa.org)
- **(Somali)** Waxay Imagine Institute diyaar kuula tahay in ay bixiso caawimaad luuqadeed codsadaayaasha arjiga luuqada ay doorbidayaan. Fadlan la Xariir Imagine Institute ee 206-492-5249 ama emayl [CCSG@imaginewa.org](mailto:CCSG@imaginewa.org)

# Technical Assistance

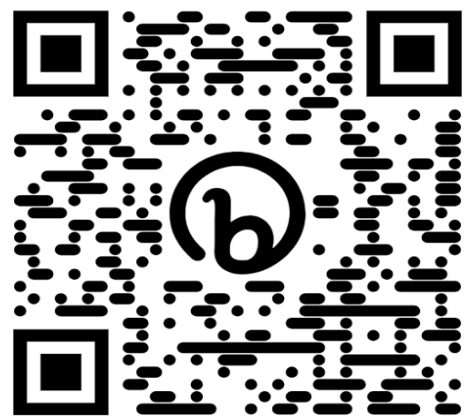
- **ZoomGrants assistance:**
  - [questions@zoomgrants.com](mailto:questions@zoomgrants.com)
  - <https://www.zoomgrants.com/about-us/request-technical-help/>
  - 866-323-5404 x4
- **Program Related Questions:**
  - [earlylearningfacilities@commerce.wa.gov](mailto:earlylearningfacilities@commerce.wa.gov)
- **DCYF – ECEAP related questions:**
  - [DCYF.ECEAP@dcyf.wa.gov](mailto:DCYF.ECEAP@dcyf.wa.gov)
- **Contact your licensor for licensing related technical assistance**





# Sign Up for Email Updates

## ELF Website + Sign Up for Email Updates



### Questions?

Email us at [earlylearningfacilities@commerce.wa.gov](mailto:earlylearningfacilities@commerce.wa.gov)

### Early Learning Facilities Program

The Department of Commerce manages funding awarded through direct appropriation and competitive processes that establish new capacity for early learning providers. The Early Learning Facilities (ELF) program supports Washington's commitment of developing additional high quality early learning opportunities for children from low-income households. Commerce's partners in the program are the Department of Children, Youth, and Families, the Office of Superintendent of Public Instruction, Washington Community Reinvestment Association, Enterprise Community Partners, Craft 3 and the Early Learning Facilities Advisory Board.



#### Related Law

RCW 43.31.565 through RCW 43.31.583  
Link to 2021-23 Program Legislation:  
SHB 1080, Sections 1057 and 1083  
ESHB 1370

Link to 2019-21 Program Legislation:  
SHB 1102, Section 1037

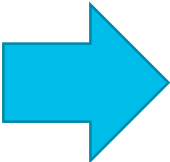
Links to 2017-19 Program Legislation:  
HB 1777  
ESSB 6095, Section 1005

#### Program Guidelines

State Funding – Eligible Organizations Guidelines  
State Funding – K-12 School Districts Guidelines  
State Funding – Direct Appropriation Guidelines  
Program Guidelines – Federally Funded Child Care Minor  
Renovations Grant  
Eligible Organizations Program Guidelines 2023-2025

#### Our Program

The Early Learning Facilities (ELF) program aims to help Early Childhood Education and Assistance Program (ECEAP) contractors and Working Connections Child Care (WCCC) providers to expand, remodel, purchase, or construct early learning facilities and classrooms necessary to support early learning opportunities for children from low-income households.



### Sign up for updates

To sign up for updates or to access your subscriber preferences, please enter your contact information below.

\*Email Address

Submit

# Early Learning Facilities Program (ELF)

Health and Safety Minor Renovations  
Funding Round Opening Webinar

Katrina Matson, Juan Aguilar, Stephanie Hohnhorst, & Ali Tope,  
Program Managers

Kristin Ramos & Megan LaPalm  
SECTION SUPERVISOR & SECTION MANAGER

Grace Ssebugwawo & Alisha Burkett, DCYF

OPENING 2/1/2024



Washington State  
Department of  
**Commerce**

**Thank you  
for  
attending!**